





Dividing Cherry Block 1 Steep Difficult Herbicide 2020

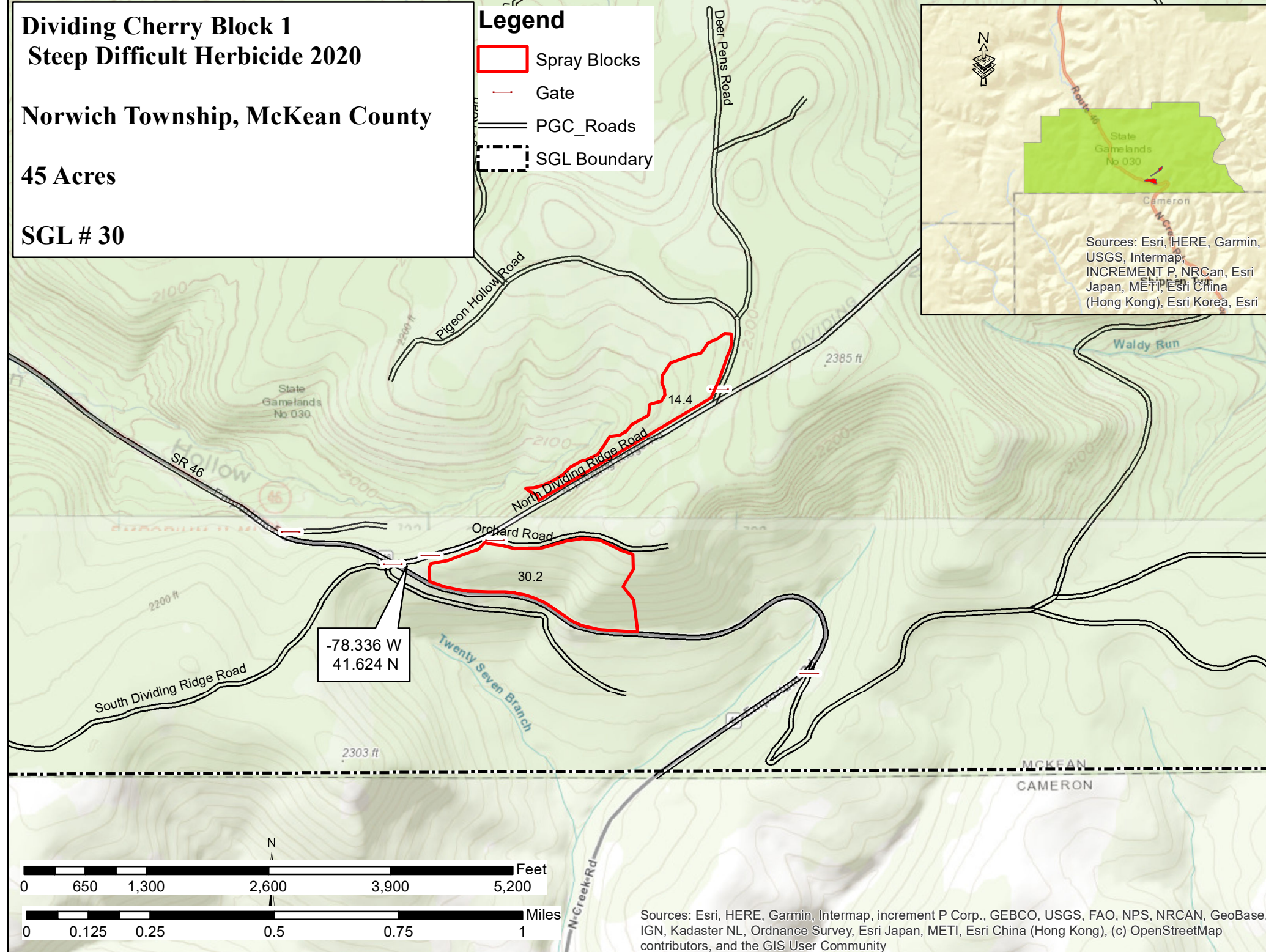
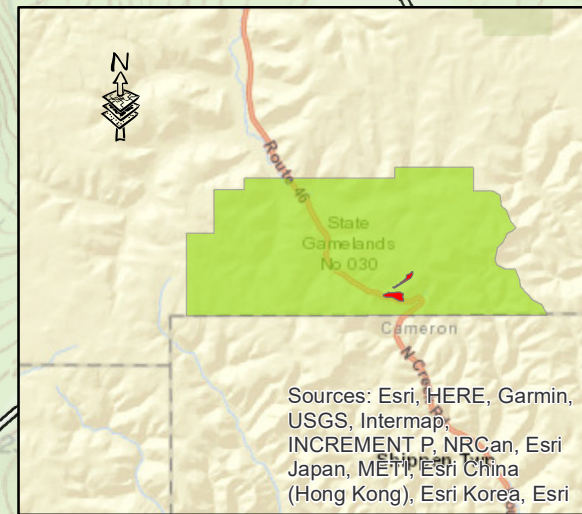
Norwich Township, McKean County

45 Acres

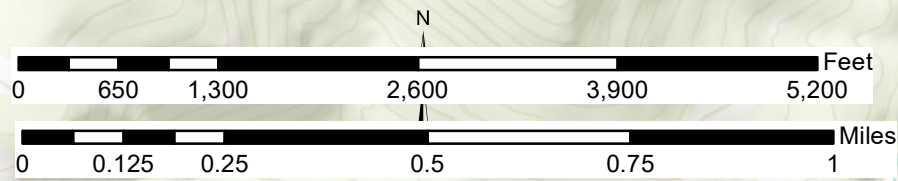
SGL # 30

Legend

-  Spray Blocks
-  Gate
-  PGC_Roads
-  SGL Boundary



-78.336 W
41.624 N



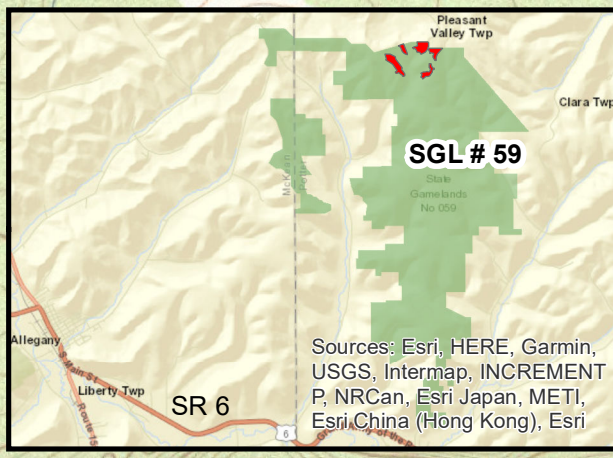
Sources: Esri, HERE, Garmin, Intermap, increment P Corp., GEBCO, USGS, FAO, NPS, NRCAN, GeoBase, IGN, Kadaster NL, Ordnance Survey, Esri Japan, METI, Esri China (Hong Kong), (c) OpenStreetMap contributors, and the GIS User Community

Ash Gone Buy 2020 Steep Difficult

SGL # 59

Potter County
Pleasant Valley Township

103 Acres



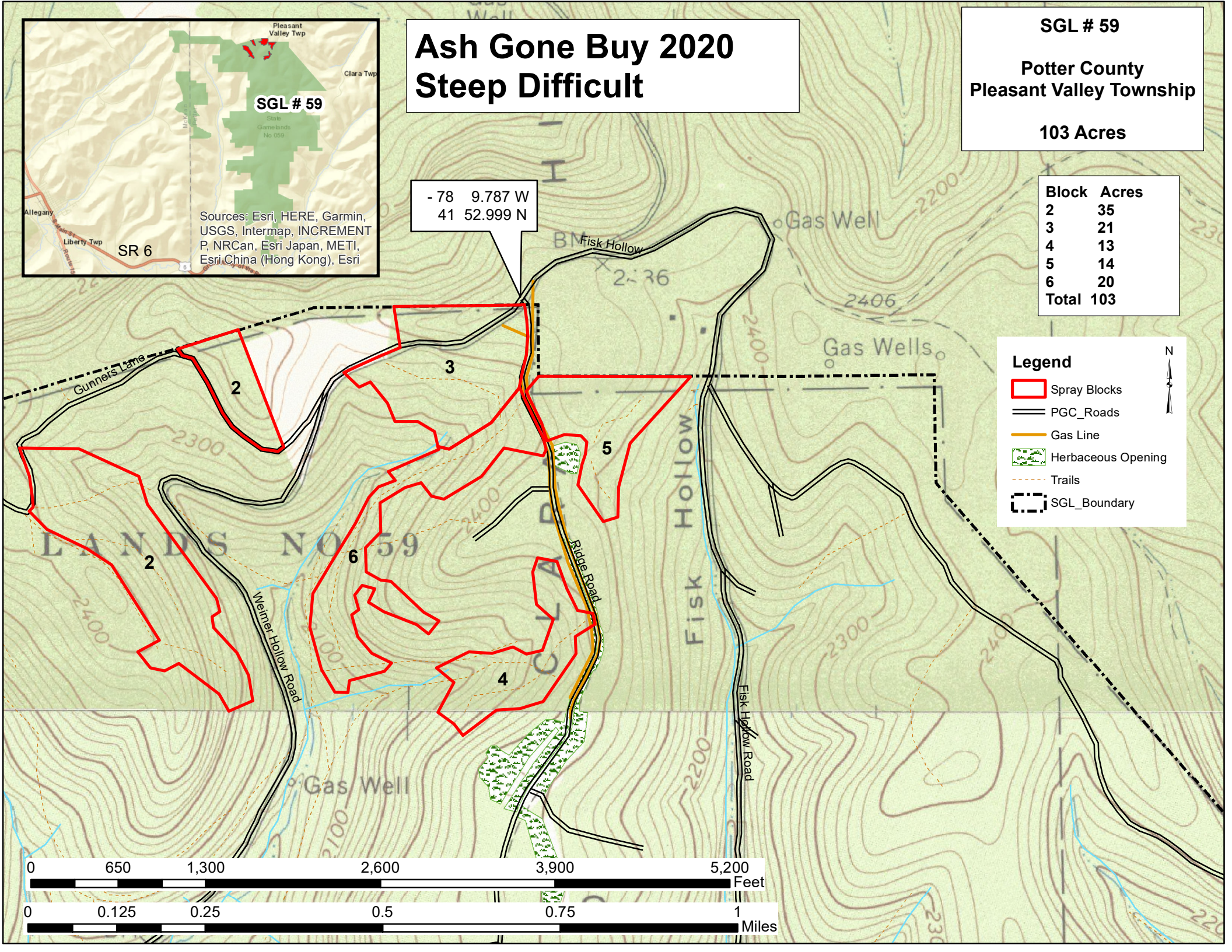
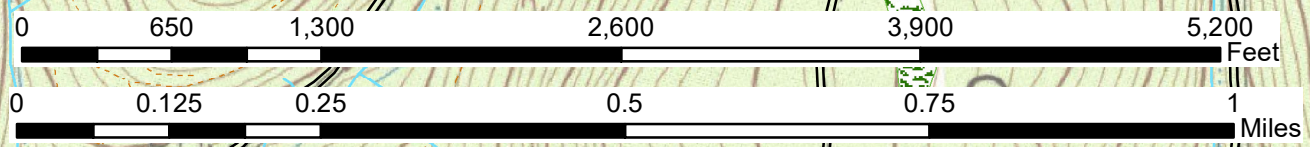
- 78 9.787 W
41 52.999 N

Block	Acres
2	35
3	21
4	13
5	14
6	20
Total	103

Legend

- Spray Blocks
- PGC_Roads
- Gas Line
- Herbaceous Opening
- Trails
- SGL_Boundary

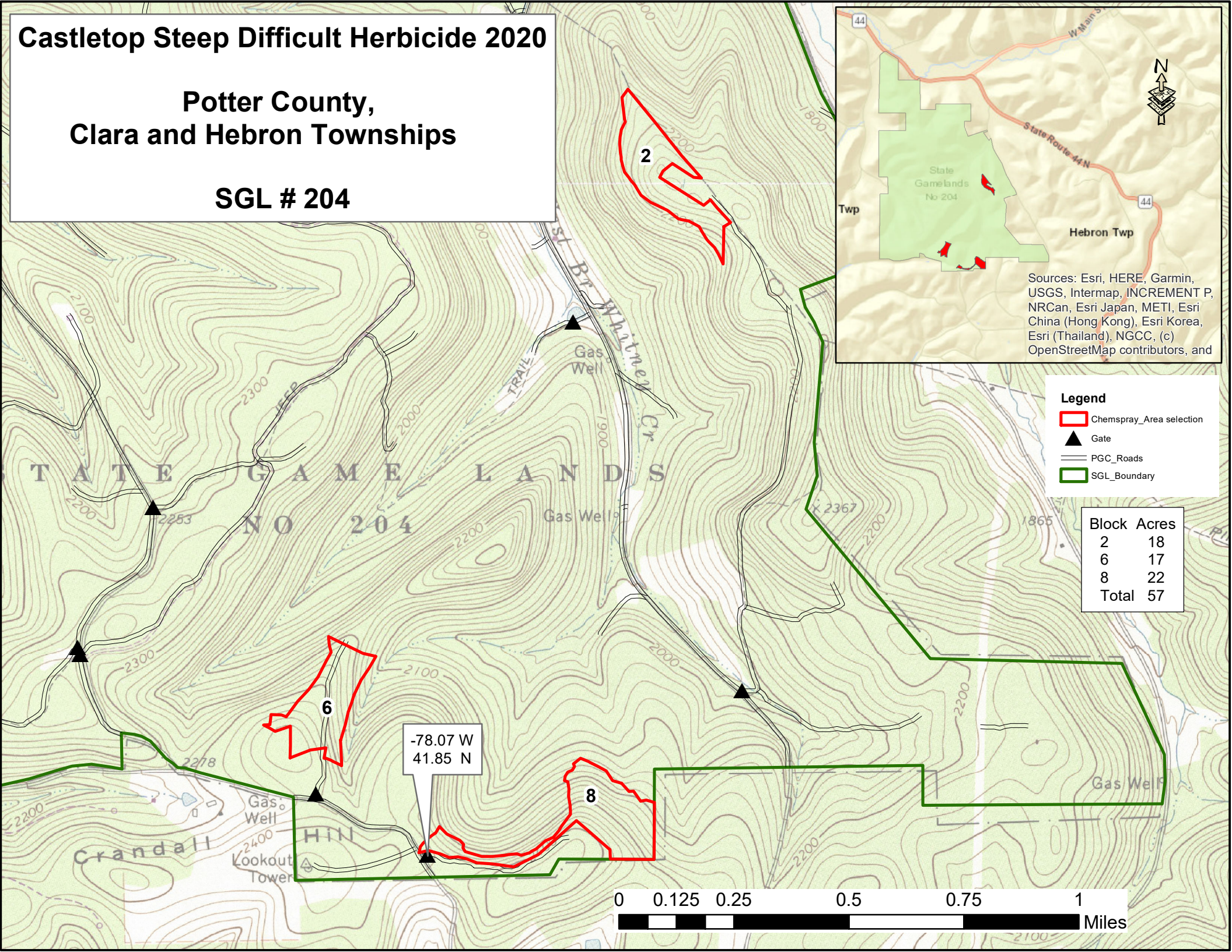
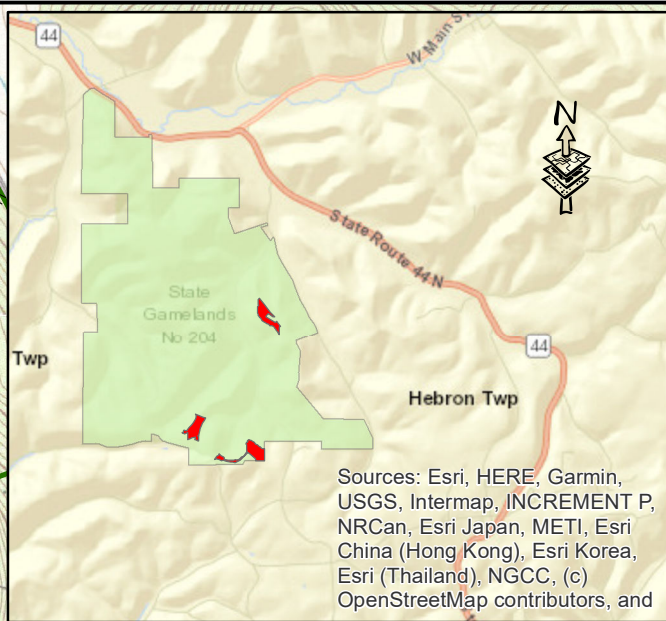
N



Castletop Steep Difficult Herbicide 2020

Potter County,
Clara and Hebron Townships

SGL # 204



Legend

- Chemspray_Area selection
- Gate
- PGC_Roads
- SGL_Boundary

Block	Acres
2	18
6	17
8	22
Total	57

-78.07 W
41.85 N

